

## NEWS FROM ALUMNI

**Kelly Keilman:** Meredith Faye was born December 29, and mom is currently on maternity leave from Peace Hospice in Great Falls. Kelly is watching her organization grow and with that growth is struck by the challenges of working within a larger system for change. Gradually, change seems to be occurring.

**Judy Kurien:** Judy is Program Director for the Galen-based AWARE facility. Here Judy works with SED children, ages 12-18, managing a caseload of 9. Still living in Alberton, she commutes to work. Judy is currently finishing up paperwork for licensure and wonders if anyone else is in the same boat....

**Cindy Ruguleiski:** Cindy also works with SED and developmentally disabled children at the North Idaho Children's Mental Health Center in Sandpoint. She sends out a "heads up" to BSWs and MSWs who like the idea of relocating to Idaho. Her agency is always looking for qualified individuals to work with this population. The office contact number is (208) 265-6798.

**Steff Briggs Turner:** Change appears to be what's going on with Steff. She recently accepted a job as Day Treatment Therapist at Intermountain Children's Home in Helena. After marrying a year and a half ago, Steff and her husband



Thom, Kelly and  
Meredith

are expecting a new baby and have bought a new house. She describes her work as "great/exciting/exhausting!"

## CONTRIBUTE TO YOUR NEWSLETTER!

- *Send us updates on your careers, travels, projects and family.*
- *Use this venue as a way to share information on trainings and workshops.*
- *We welcome photo files and will insert them as space allows.*
- *Let us know the kinds of items you would like to see in your newsletter.*

## ALUMNI FRIDAYS

Once again, it's time to consider sharing your knowledge and skills with your colleagues. The University of Montana School of Social Work is now soliciting proposals from MSW alumni and current students to participate in our 2<sup>nd</sup> **Alumni Friday** - an after-

noon of workshops led by MSW alumni and students. These workshops should offer participants (MSW alumni, students, and faculty) some hands-on training in areas related to your practice or innovative possibilities for social work practice and include time for

audience dialogue. We invite you to be creative and show your colleagues a slice of your work world while sharing your knowledge and skills interactively. Please submit your proposals to Janet Finn at [janet.finn@umontana.edu](mailto:janet.finn@umontana.edu) by **March 22, 2007.**

### The upcoming Alumni Friday is April 13, 2007

We hope to offer participants a choice of workshops, which will run concurrently from 3:15 - 5:00 pm. We will end the day with a social hour in the Gallagher Business Building 2<sup>nd</sup> Floor Piazza for alumni, students, and faculty to mix and mingle.

## MSW PROFILE: LANETTE DIAZ

New Job: As of August 2006, LaNette joined Forward Montana, a grassroots, non-partisan yet political organization that is building a youth-directed force using peer-to-peer outreach to engage, mobilize and recruit a new generation of progressive leaders and promote progressive policy. Forward MT is involved in shaping policy that will help low-income families and individuals by increasing CHIP, working to control

predatory lenders, increase K-12 funding, and exploring affordable housing issues.

LaNette hopes that by engaging the new millennial generation in political progressive work, they will make changes in the current political world that will reflect a more just and fair government for all people.

When she's not working with youth to change the world, LaNette has fun making the

most of the Montana outdoors by hiking, skiing, and boating. As a new homeowner, she is also engaged in the myriad of tasks this involves.

This summer, LaNette plans to travel the four corners of Colorado, New Mexico, Arizona and Utah to explore the great parks, camping, and hiking. In June, she'll head to Alaska for a wedding and will hopefully get in some sea kayaking and hiking.

**FORWARD**  
MONTANA



## POLICY PAPERS POSTED ON THE SSW WEBSITE

Beginning this spring, several students will see their work from SW 531 copyrighted and published on the School of Social Work website.

The idea to post policy analysis papers was developed by Dr. Carol Hand, MSSW, Ph.D., who first taught this course in the fall of 2004. Her prior experience as a program and planning analyst and ad-

ministrator made her particularly aware of the challenges to meaningful opportunities for informed public involvement in the policy development arena. After reading exemplary work of importance to Montana, Dr. Hand realized that student research and critical thinking could benefit legislators, professionals, and the general public. She realized that the thought-

ful work of dedicated graduate students should be shared as a resource for policy deliberations. Faculty within the School, and the School's Advisory Committee, concurred.

Thanks to Sarah Aronson (Class of 2005-2007) for helping to bring this great idea to fruition!

"WE WELCOME FEEDBACK AND DIALOGUE ABOUT THE CRUCIAL ISSUES THAT FACE OUR STATE, NATION, AND THE WORLD TODAY AND ARE EXCITED ABOUT THE POSSIBILITY OF ENGAGING IN PRODUCTIVE DIALOGUE."  
-DR. CAROL HAND

## REMEMBERING MORGAN VOTH (1972-2006)

We lost our dear friend and colleague Morgan Voth to suicide in December, 2006. His family, loved ones, and friends mourned his death and celebrated his life at a memorial service held at University Congregational Church on January 27, 2007. Morgan earned both his BSW and MSW at The University of Montana. He will be remem-

bered for his brilliant mind, his commitment to service, and his dedication to Montana's children and families. Morgan devoted the majority of his career to child protective services, and he earned the respect of clients, co-workers, and the social work community. Morgan was an active member of the Montana Chapter of the National

Association of Social Workers.

Morgan joined the first class of our MSW program in 2002. He quickly earned the respect and support of this new group of friends, colleagues, and teachers. You could often hear folks saying, "Morgan is the smartest guy I ever met." And beyond



**MORGAN VOTH** (CONT. FROM PAGE 2)

his keen intelligence, Morgan was truly a gentle man – strong, caring, and committed. His colleagues looked to him for an empathetic ear, sound direction, and unfailing support. We remember him as a humble man who demanded much of himself and sought the best in others. His work ethic was matched by the fierce conviction that he could make things better for the kids and families of Montana.

Morgan’s serious determination was balanced by the sheer joy he found in family and in being a Dad. He simply lit up when talking about his beautiful daughters Emmer-son and Anika. Once in a conversation about the importance of political participation, Morgan shared a story of taking his daughters to vote with him – he saw it as such an important father-daughter activity. It was Morgan’s commitment as a father and

love of his girls that fueled his commitment as a social worker. He touched so many lives, and we miss him. Survivors include his wife, Kari Voth and daughters of Missoula; father, Gene Voth; and brother David Voth. Morgan is preceded in death by his mother Mary Neufeld. A fund has been set up at the University Congregational Church to establish an education savings account for Emmerson and Anika. Anyone interested in

contributing may make checks payable to U.C.C. and mail them to 405 University Avenue, Missoula, MT, 59801.



**CONTINUING EDUCATION OPPORTUNITIES**

Terri Carlson (Class of 2005-2007) suggested the following CE opportunities for students and alumni alike:

**Trauman Focused CBT (TF-CBT)**

<http://tfcbt.musc.edu/index.php> This course is online through the Medical University of South Carolina and has no fees and we earn

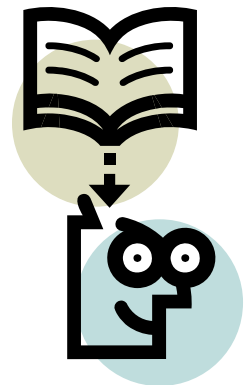
credits.

**Jungian Sandplay Therapy**

<http://www.temenospress.com/index.htm> endorsed by the Association for Play Therapy <http://www.a4pt.org/> is taught by Barbara Turner, PhD, LMFT, RPT-S. The course is incremental and

affordable and can lead to certification if you choose to go that direction. It also gives out CEU's with each segment so you can earn as many or as few as you desire.

We welcome any suggestions you might like to share about upcoming continuing education.



**KUDOS TO AWARD AND SCHOLARSHIP WINNERS**

**2006 Outstanding Presentation Award UM Faculty/Graduate Student Research Conference:**

**Patsy Clark** presented research on Maggie Smith Hathaway

**Alysha Goheen** presented research on the BSW Program Evaluation

**2007 Scholarship winners**

*Bonnie and Phil Hamilton Scholarship:*

**Patty LaPlant  
Barbara Cowan**

*Sydney Davidson Maxwell Scholarship:*

**Kristin Best**





## LET'S KEEP IN TOUCH...

### SCHOOL OF SOCIAL WORK

Rankin Hall  
University of Montana  
Missoula, MT 59812

Phone: 406-243-5543  
Fax: 406-243-5275

Janet Finn, MSW Program Director

Cindy Garthwait, Chair, SSW

David Forbes, Dean, College of Health  
Professionals and Biomedical Sciences

Newsletter writer/editor: Patsy Clark  
(Class of 2005-2007)

*Current students, graduating students and alumni are asked to keep us current on preferred electronic contact information. This newsletter is for you and we want to make sure it gets to where you are.*

*Graduating students will no longer have their Grizmail account, so it's doubly important we have an alternate email on file. Please update your contact information to [patricia.l.clark@umontana.edu](mailto:patricia.l.clark@umontana.edu)*

---

**VISIT US AT:** [HTTP://WWW.HEALTH.UMT.EDU/SW/HTM](http://www.health.umn.edu/sw/htm)

---

## SCHOOL OF SOCIAL WORK RECEIVES HARTFORD GRANT

The School of Social Work is a recent recipient of a three year Hartford Foundation Practicum Partnership Program grant. Tondy Baumgartner, who oversaw the grant writing process and coordinates the program, describes it as "an innovative practicum rotation used to train students in the field of aging." The rotations take students through many aspects of aging in an effort to expose them to varying environments, issues and experts.

In connection with the grant, Baumgartner has cultivated partnerships with com-

munity aging experts who infuse aging topics into the Hartford Scholar's practicum seminar, led by Cindy Garthwait. A program advisory board advises on opportunities for placement within the community and shares ideas on the best way to build skills to meet the greatest needs. The grant has produced many innovative practica that touch on underserved populations, mental health care in rural environments, and a focus on caregiver services.

In their second year, MSW Hartford Scholars begin their rotations, attend the exclu-

sive practicum seminar, and receive a substantial stipend for each term. First year MSW students can become Hartford scholars and receive preference for second year benefits.

Baumgartner is pleased with the level of interest in the program which began last fall and predicts the number of students drawn to the field will only increase. The interest reflects the trends in aging as well as the increasing need for private casework and clinical services.

Baumgartner was assisted by Garthwait and Patsy Clark in the grant writing process.



Tondy Baumgartner is coordinating the Hartford Scholars grant for 2nd year MSW students